

EFFECT OF INFILLS ON TORSION AND SOFT STOREY IN A CONVENTIONAL RESIDENTIAL BUILDING IN TEHRAN-IRAN

Azadeh NOORIFARD

*PhD. Candidate in Architecture, Iran University of Science and Technology, Tehran, Iran
anoorifard@iust.ac.ir*

Mohammad Reza TABESHPOUR

*Assistant Professor in the Department of Mechanical Engineering, Sharif University of Technology, Tehran, Iran,
tabesh_mreza@yahoo.com*

Fatemeh MEHDIZADEH SARADJ

*Associate Professor in the Department of Architecture and Urbanism Engineering, Iran University of Science and Technology, Tehran, Iran
mehdizadeh@iust.ac.ir*

Keywords: Conventional Residential Building, Seismic Design, Infill Walls, Torsion, Soft Storey

ABSTRACT

Masonry infill walls are usually considered as non-structural elements, so analysis and design of structures are based on the bare frames. But many experiences of past earthquakes show that some designed and constructed buildings by engineers have been damaged during earthquakes because of disregarding the negative effects of walls.

The main goal of this paper is to evaluate the amount of overall detrimental effects of infill walls such as torsion and soft storey in conventional buildings. A 5-storey residential building in Tehran has been selected as a case study. For studying the effects of infill walls in seismic behaviour of structures, simulations have been performed with and without walls to compare construction condition with design condition based on linear static method. To model infill walls an equivalent compression diagonal strut has been used.

As a result of this case study it can be said that the building in construction condition will suffer torsion because of infill walls which are not modelled in design process but connected to the structure in implementation. Since this research has been done on a residential building in southern lot with the most symmetrical arrangement of infill walls, it increases the importance of studying arrangements and connections of walls in other buildings such as ones located in northern or corner lots. Contrary to the initial impression that there is a soft storey in urban buildings because of parking and open spaces on ground floor, in buildings with architectural design similar to the analysed one, due to the high stiffness ratio of the structure on ground floor to the upper floors, soft storey would not happen with a high safety factor.

INTRODUCTION

Nowadays structural engineers usually consider masonry infill walls as non-structural elements during analysis and design process of buildings (Mondal and Jain, 2008; Tsai and Huang, 2009; Rodrigues et al, 2010; Pradhan et al, 2012; Noorifard et al, 2014) and only calculate their weight. Consequently, analysis and design of the structures are based on the bare frames without the effects of infills (Mostafaei and Kabeyasawa, 2004; Pradhan et al, 2012; Noorifard et al, 2014). Experiences of past earthquakes show that some designed and constructed buildings by engineers have been damaged during earthquakes because of disregarding the negative effects of walls (Tabeshpour, 2009; Rodrigues et al, 2010). Although seismic standards such as standard No. 2800 implicitly take into account infill walls in calculation and determination of seismic forces but they are often neglected. In fact, despite special attention to seismic resistant design of structures, disregarding to infill walls will cause loss of life and property (Mahdi Tet et al, 2010).

Structures with simple and regular geometry perform well during earthquakes, while in many cases, despite designing regular structure, asymmetrical infill walls cause irregularity in plan and discontinuous infill walls in elevation cause irregularity in height (Mahdi et al, 2010; Tabeshpour et al, 2012). Unfortunately these irregular buildings constitute a large portion of the modern urban buildings (Dubey and Sangamnerkar, 2011) and experiences of past earthquakes show these buildings are vulnerable. Several studies of structural damages during past earthquakes reveal that torsion is the most critical factor leading to major damage or complete collapse of buildings (Dubey and Sangamnerkar, 2011). A significant part of torsional effects created by inappropriate distribution of stiffness in buildings is the result of arrangement of walls (Tabeshpour, 2009; Moghaddam et al, 2010; Charleson, 2011; Aliaari and Memari, 2005; Key, 1988; Vicente et al, 2012; Özmen and Ünay, 2007) (Fig.1). Sometimes, in spite of designing regular structures in elevation, due to reducing or eliminating infill walls in adjacent floors, vertical irregularity occurs (Mahdi et al, 2010; Özmen and Ünay, 2007; Asteris, 2003; Zhao, et al, 2009; Arnold, 2006; Mulgund and Kulkarni, 2011; Yata an, 2011) and soft story is formed in an earthquake (Fig. 2).

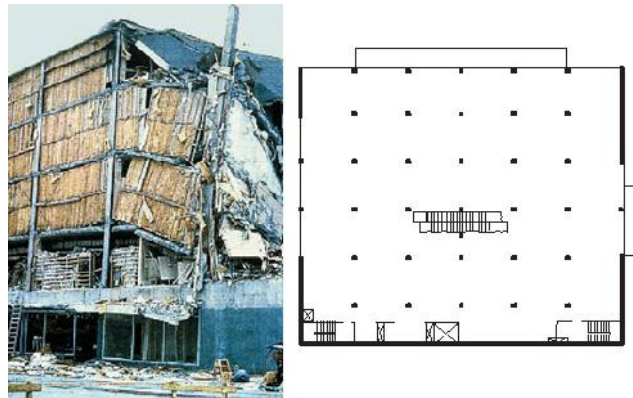


Figure 1. J. C. Penney building was destroyed during the 1964 Alaska earthquake because of torsional effect formed by arrangement of walls (Arnold, 2006)



Figure 2. Soft storey in the 1999 kocaeli (Turkey) earthquake due to elimination of masonry infill wall in ground floor (Yata an, 2011)

The main goal of this paper is to evaluate the amount of detrimental effects of infill walls in conventional buildings. Since the probability of torsion in the buildings located in corner or northern urban lots due to urban regulation, natural light, solid and perforated walls layout are high, a 5-storey residential building in a south lot with a width of 10 m in Tehran has been selected as a case study. In selected building, parking is located on the ground floor and four upper floors are residential. Each floor contains a set of residential units with three bedrooms. Bedrooms located on south side and stair and living room on north side of the building. Due to the separation of public, semi-private and private zones, skylight for lighting and ventilation of the kitchen is designed in middle of west side (Fig.3).

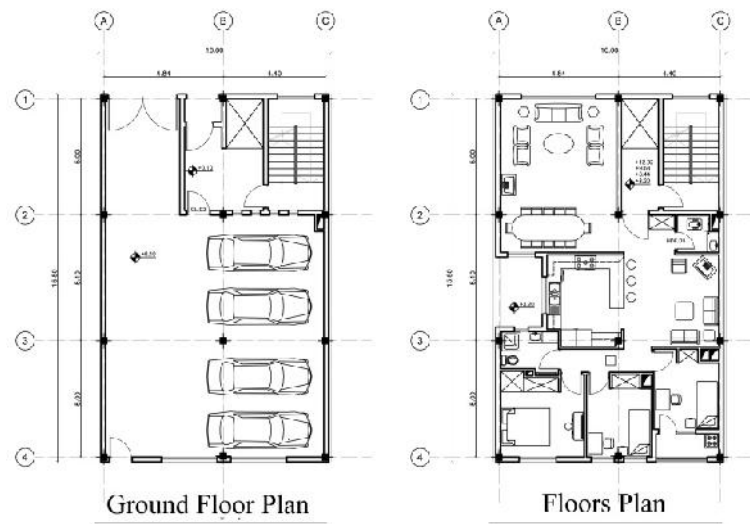


Figure 3. Architectural Plans

ANALYTICAL MODELLING

For studying the effects of infill walls in seismic behaviour of structures, simulations are performed by a structural analysis and design software for two cases; with and without walls to compare construction condition with design condition. In both cases, seismic force has been calculated based on period of infilled frame which is 80% of empirical period of bare frame according to standard No. 2800. In this paper designed IF has been used for first condition or designed infilled frame and constructed IF has been used for second condition or constructed infilled frame. Since linear static method is used in structural calculation of conventional buildings, this method is selected for analytical modelling.

MATERIAL PROPERTIES AND DESIGN GRAVITY FORCES

Since infill walls have the most influences on seismic behaviour of reinforced concrete moment frames, so the structural system of selected building is reinforced concrete intermediate moment resisting frame in two directions, concrete and rebar properties are summarized in table 1. Floors have been constructed by joist and block and covered by ceramic tiles. Peripheral walls have been constructed by hollow clay block with a thickness of 20 cm and interior walls by hollow clay block with a thickness of 10 cm. Building cladding and inner layer of stair walls are granite tiles and inside of walls and ceilings are coated by 2-cm-thick gypsum and clay plaster and 1-cm-thick gypsum plaster. According to these introduced material, design forces have been determined based on requirements of the Iranian national building code-part 6.

Table 1. Concrete and rebar properties

Density	Modulus of Elasticity	Poisson's Ratio	Coefficient of Thermal Expansion	f_c Concrete compressive Strength	f_y Bending Reinforcement Yield Stress	f_{ys} Shear Reinforcement Yield Stress
kgf/m ³	kgf/cm ²	-	1/°c	kgf/cm ²	kgf/cm ²	kgf/cm ²
2500	2.5E5	0.15	1E-5	250	4000	4000

SEISMIC FORCES

Seismic forces have been calculated based on Iranian standard No. 2800. The data used in calculation of seismic coefficient are as follows: It is residential building and classified to moderate important group, the building is located in Tehran and design base acceleration ratio is 0.35, soil type is II, structural system is reinforced concrete intermediate moment resisting frame with building response factor of 7. In calculation of fundamental period of vibration of the structure, building height is assumed 16.56 m and it is considered that infill wall impose resistant on frame displacement. In structural design, empirical formula presented in standard No. 2800 has been used to determine period of structure.

MODELLING OF INFILL WALLS

As it is tried to study detrimental overall effects of walls such as torsion and soft storey, so simulation is based on macro model. In this method infill walls are modelled with an equivalent compression diagonal strut. Modulus of elasticity has been assumed 800 times of compressive strength of wall, the effective width of equivalent strut, 0.2 times of wall diameter (Tabeshpour et al, 2012; Tabeshpour, 2013) and thickness of strut, the same as wall.

Dimensions of 9 holes hollow clay blocks used in the building are 20×20×20 cm, thickness of external shell is 9 mm and inner divider walls are 7 mm. Since the assumptions presented in top paragraph are based on previous researches done on solid brick, so, in order to simulate the real condition, a factor that is the ratio of net area to total cross section of block, proposed to determine the section of equivalent as a hollow box. Based on performed experiences, the compressive strength of wall with hollow clay block and cement mortar is 39 kg/cm² (Shahnazari, 1998). For considering the effect of opening on strength and stiffness of walls, Equation 1 recommended by the New Zealand Society for Earthquake Engineering, has been used (NZSEE, 2006).

$$\lambda_{\text{Opening}} = 1 - \frac{1.5 L_{\text{Opening}}}{L_{\text{inf}}} \quad (1)$$

EVALUATION CRITERIA

Since the main goal of this paper is to investigate the influence of infill walls on formation of torsion and soft story in buildings, therefore, the evaluation criteria of these two phenomena for assessing the outputs of analyses are discussed in the following.

EVALUATION CRITERIA OF TORSION

For evaluating torsion, three criteria are considered as below:

1. **The first three modes of modal analysis:** If the torsional mode of the structure occurs in first or second mode of modal analysis instead of third mode, the structure will be susceptible to torsion.
2. **The distance between center of mass and center of stiffness:** According to the section 1-5-3 of standard No. 2800, lateral load resisting elements shall be configured in a manner that the torsion resulting from earthquake loading is minimized. For this purpose it is recommended that the eccentricity between the center of mass and center of stiffness, at each floor level, be less than 5% of the building dimension in that level in direction under consideration. In section 1-8-1-1-b of standard No. 2800 as a condition of plan regularity, in each story, the distance between the center of mass and stiffness in each orthogonal direction shall not exceed 20% of building dimension in that direction (Standard No 2800-05, 2005). In this standard there is no mandatory for the maximum allowable amount of eccentricity, but in Nepal National Building code (NBC 201), the distance between center of mass and center of rigidity including the effects of infill wall shall be less than 10% of building dimension at the same direction (NBC 201, 1994).
3. **The ratio of the maximum relative storey drift to the average relative storey drift:** In table 9.5.2.3.2 of ASCE 7-02 standard and in section 1-8-1-1-e of standard No. 2800 as a condition of plan regularity, in each storey the maximum drift, including accidental torsion, at one end of the structure shall not exceed 20% of the average of the storey drift of the two ends of the structure (ASCE 7-02, 2003; Standard No. 2800-05, 2005).

EVALUATION CRITERIA OF SOFT STOREY

In table 9.5.2.3.3 of ASCE 7-02 standard and in section 1-8-1-2-b of standard No. 2800 as a condition of vertical regularity, the lateral stiffness of each story shall not be less than 70% of that in the storey above or 80% of the average stiffness of the three stories above (ASCE 7-02, 2003; Standard No. 2800-05, 2005).



RESULTS

In calculating the fundamental period, the effective stiffness of the cracked section has been considered. This is done by considering the moment of inertia for beam equal to $0.5 I_g$ and for columns equal to I_g . These values are 1.5 times of moment of inertia for cracked sections. In the following, the outputs of analysis are presented and the vulnerability of structure in terms of torsion and soft storey is also evaluated.

RESULTS OF TORSION EVALUATION

First three modes of modal analysis are presented in table 2, and structure movements illustrated in Fig 4. According to these results of simulation, torsion occurs at second mode of modal analysis for constructed infilled frame, while this is not expected for designed infilled frame. It should be noted that torsional effects of short column like C1, B4 are neglected in simulation, it may increase torsional vulnerability. The results in table 3 and Fig 5 show that the distance between CM and CR along Y axis is greater than 10% of building dimension, it also confirms torsion of the structure in construction conditions. Comparison of eccentricity in design condition with construction condition in table 3 shows that structure in construction condition has to resist greater moment of torsion than that is considered in design process. This is variable from 1.25 of design amount in first floor to 2.4 of design amount in fifth floor along Y axis.

Ratios of the maximum relative storey drift to the average relative storey drift are summarized in table 4 and Fig 6. However, these are less than 1.2 but in the case of constructed infilled frame, ratios along X axis with considering negative accidental eccentricity are close to 1.2.

Table 2: The fundamental vibration periods of building in first three modes of modal analysis

	Mode 1				Mode 2				Mode 3			
	Period	Dir.	UX	UY	Period	Dir.	UX	UY	Period	Dir.	UX	UY
Designed IF	1.015	X	73.75	0.002	0.965	Y	0.008	73.43	0.823	T	0.188	1.044
Constructed IF	0.890	X	74.93	0.000	0.620	T	1.360	3.372	0.589	Y	0.049	77.04

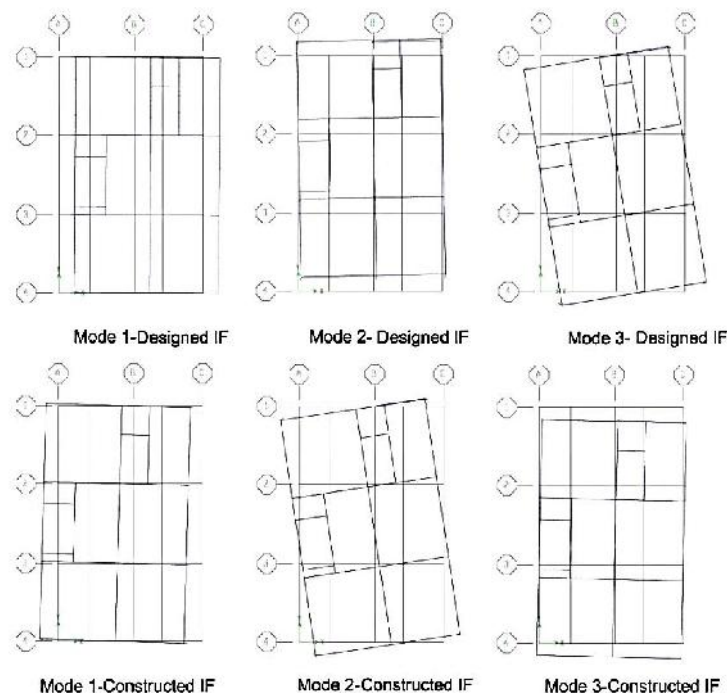


Figure 4: The first three modes of modal analysis

Table 3: The distance between CM and CR to building dimension at two directions

	STOREY 1		STOREY 2		STOREY 3		STOREY 4		STOREY 5	
	%ex	%ey	%ex	%ey	%ex	%ey	%ex	%ey	%ex	%ey
Designed IF	4.264	6.609	2.652	6.497	2.316	5.583	1.883	5.007	-1.461	2.285
Constructed IF	4.026	9.490	2.511	11.470	4.524	12.570	6.190	13.483	6.017	12.477

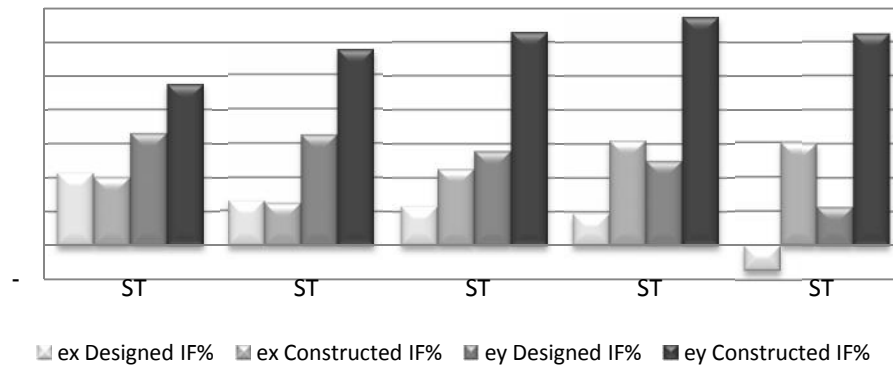


Figure 5: The distance between CM and CR to building dimension at two directions

Table 4: Ratio of the maximum relative storey drift to the average relative storey drift

	EQX	EQXP	EQXN	EQY	EQYP	EQYN
	max/ ave	max/ ave	max/ ave	max/ ave	max/ ave	max/ ave
STOREY 1						
Designed IF	1.0250	1.0680	1.1170	1.0120	1.0480	1.0240
Constructed IF	1.0920	1.0220	1.1600	1.0170	1.0700	1.0350
STOREY 2						
Designed IF	1.0080	1.0850	1.1000	1.0130	1.0490	1.0230
Constructed IF	1.0970	1.0300	1.1620	1.0110	1.0680	1.0440
STOREY 3						
Designed IF	1.0050	1.0980	1.0870	1.0160	1.0530	1.0200
Constructed IF	1.1060	1.0410	1.1700	1.0100	1.0500	1.0690
STOREY 4						
Designed IF	1.0140	1.1060	1.0780	1.0200	1.0560	1.0170
Constructed IF	1.1120	1.0490	1.1740	1.0240	1.0370	1.0850
STOREY 5						
Designed IF	1.0160	1.1090	1.0760	1.0300	1.0660	1.0070
Constructed IF	1.1200	1.0580	1.1800	1.0320	1.0310	1.0940

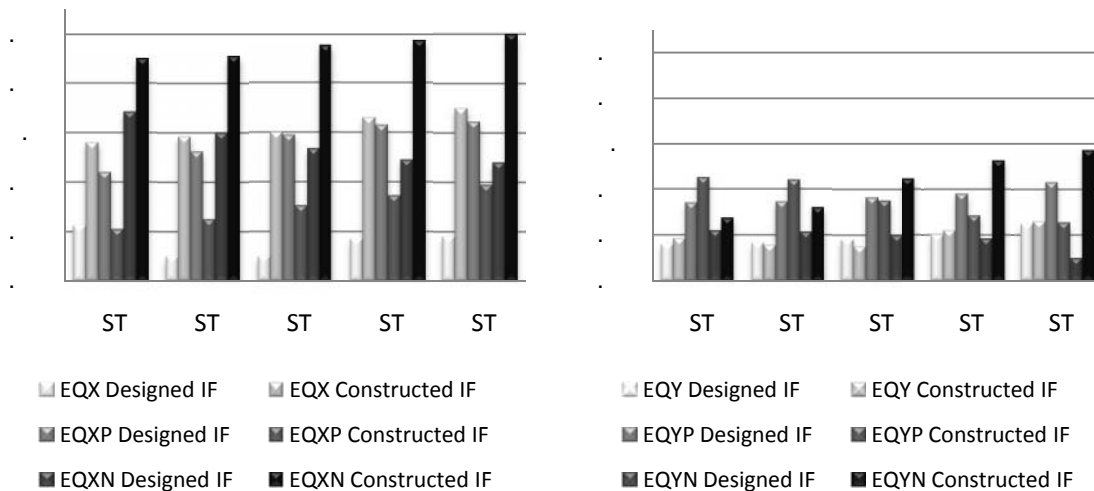


Figure 6: Ratio of the maximum relative storey drift to the average relative storey drift

RESULTS OF SOFT STOREY EVALUATION

To control the soft storey, a point in center of mass of upper floor has been defined and connected to the diaphragm. To calculate the stiffness of floors, the force of 5% of building weight, equal to 4500 kg in each direction applied to the point and displacement has been calculated. The results presented in table 5 shows that there is no soft storey neither in constructed infilled frame nor in designed infilled frame.



Table 5: The ratio of storey stiffness at two directions for controlling soft storey

Unit: kgf, m	STOREY 1									
	K_x	K_{x1}/K_{x2}	$K_{x1}/((K_{x2} + K_{x3} + K_{x4})/3)$		K_y	K_{y1}/K_{y2}	$K_{y1}/((K_{y2} + K_{y3} + K_{y4})/3)$			
Designed IF	122951	1.76	2.41		126404	1.76	2.34			
Constructed IF	151515	1.62	2.07		312500	1.34	1.56			
Unit: kgf, m	STOREY 2									
	K_x	K_{x2}/K_{x3}	$K_{x2}/((K_{x3} + K_{x4} + K_{x5})/3)$		K_y	K_{y2}/K_{y3}	$K_{y2}/((K_{y3} + K_{y4} + K_{y5})/3)$			
Designed IF	69876	1.54	1.84		71885	1.47	1.72			
Constructed IF	93555	1.40	1.58		233161	1.23	1.30			
Unit: kgf, m	STOREY 3				STOREY 4				STOREY 5	
	K_x	K_{x3}/K_{x4}	K_y	K_{y3}/K_{y4}	K_x	K_{x4}/K_{x5}	K_y	K_{y4}/K_{y5}	K_x	K_y
Designed IF	45409	1.21	48966	1.18	37594	1.21	41436	1.18	31163	35019
Constructed IF	66667	1.13	189076	1.06	58901	1.12	178571	1.04	52570	171103

CONCLUSIONS

Conclusion of this case study has been presented in two sections as follows:

Torsion: The building in construction condition will suffer torsion in the earthquake because of infill walls which are not modelled in design process but connected to the structure in implementation. Since this research has been done on a residential building in southern lot with the most symmetrical arrangement of infill walls, the results increase the importance of studying arrangements and connections of walls in other buildings such as ones located in northern or corner lots. It should be noted that torsional effects of short column are neglected in simulation; it may increase torsional vulnerability of building in construction condition. Another issue that must be noted is that due to popularity of hollow clay blocks in construction of residential buildings in Iran, walls in simulation are assumed like this, while recycled material from demolition of old building like solid clay brick are often used for walls of underground floor, ground floor or kitchens. Since the compressive strength of solid clay brick is higher than hollow clay block, risk of torsion will be much more severe.

Soft storey: Contrary to the initial impression that there is a soft storey in urban buildings because of parking and open spaces on ground floor, in buildings with architectural plan similar to the analyzed one, due to high stiffness of structure in the bottom floors to the top floors and longitudinal walls along adjacent neighbours lots in all floors, soft storey would not happen with a high safety factor.

REFERENCES

- Aliaari Mohammad, Memari and Ali M (2005) Analysis of masonry infilled steel frames with seismic isolator subframes, *Engineering Structures*, 27: 487–500
- Arnold Christopher (2003) *Seismic Issues in Architectural Design, FEMA 454: Designing for Earthquakes, A manual for Architects*
- ASCE 7-02 (2003) *Minimum Design Loads for Buildings and Other Structures*, 2nd Edition, American Society of Civil Engineers, Reston, Virginia, United States
- Asteris PG (2003) Lateral Stiffness of Brick Masonry Infilled Plane Frames, *Journal of Structural Engineering*, 129: 1071-1079
- Charleson AW (2011) *Seismic Design for Architects Outwitting the Quake* (in Farsi) Translated by Golabchi M and Sorooshnia E, 2nd Edition, University of Tehran Press, Tehran
- Dubey SK and Sangamnerkar PD (2011) SEISMIC BEHAVIOUR OF ASSYMETRIC RC BUILDINGS, *IJAET*, 2(4): 296-301
- Key David (1988) *Civil Engineering Design - Earthquake Design Practice for Buildings*, Thomas Telford, London
- Mahdi T, KhoramiAzar M and KhaliliJahromi K (2010) *Partition Walls Types and Structural Design Issues; Research Report No R-569*, (in Farsi), Building and Housing Research Center, Tehran
- Moghadam H, Mohammadi M Gh and Jahromi K Kh (2010) *Behaviour of Single and Multilayer Infill Steel Frame* (in Farsi) Research Report No. R-555, Building and Housing Research Center, Tehran
- Mondal G and Jain SK (2008) Lateral stiffness of masonry infilled reinforced concrete (RC) frames with central

opening, *Earthquake Spectra*, 24(3): 701–723

Mostafaei H and Kabeyasawa T (2004) Effect of Infill Masonry Walls on the Seismic Response of Reinforced Concrete Buildings Subjected to the 2003 Bam Earthquake Strong Motion: A Case Study of Bam Telephone Center, *Bull. Earthquake Research Institute, the University of Tokyo*, 79: 133-156

Mulgund GV and Kulkarni AB (2011) Seismic Assessment of RC Frame Buildings with Brick masonry Infills, *INTERNATIONAL JOURNAL OF ADVANCED ENGINEERING SCIENCES AND TECHNOLOGIES*, 2(2): 140-147

NBC 201 (Nepal National Building code) (1994) Mandatory Rules of Thumb Reinforced Concrete Buildings with Masonry Infill, Babar Mahal, Kathmandu, Ministry of Physical Planning and Works, Nepal

Noorifard A, Tabeshpour MR, Vafamehr M and Mehdizadeh Saraj F (2014) Effective Measures in Design Process of Conventional Medium-Rise Buildings to Prevent Detrimental Seismic Effects of Walls, *2nd Seminar on Structural Investigation of Non-Structural Elements*, Tehran, Iran

NZSEE (New Zealand Society for Earthquake Engineering) (2006) Assessment and Improvement of the Structural Performance of Buildings in Earthquakes, Recommendations of a NZSEE Study Group on Earthquake Risk Buildings, Wellington, New Zealand

Özmen Cengiz and Ünay Ali İhsan (2007) Commonly encountered seismic design faults due to the architectural design of residential buildings in Turkey, *Building and Environment*, 42: 1406-1416

Pradhan PM, Pradhan PL and Maskey RK (2012) A Review on Partial Infilled Frames under Lateral Loads, *KATHMANDU UNIVERSITY JOURNAL OF SCIENCE, ENGINEERING AND TECHNOLOGY*, 8(1): 142-152

Rodrigues H, Humberto V and Anibal C (2010) Simplified Macro-Model for Infill Masonry Panel, *Journal of Earthquake Engineering*, 14: 390-416

Shahnazari MR (1998) Study of steel infilled frames behaviour under lateral load in roof level, Doctor of Philosophy in civil engineering, Iran University of Science and Technology, Tehran, Iran

Standard No 2800-05 (2005) Iranian Code of Practice for Seismic Resistant Design of Buildings (in Farsi) 3rd Edition, Building and Housing Research Center, Tehran

Tabeshpour MR, Azad A and Golafshani AA (2012) Seismic Behavior and Retrofit of Infilled Frames, Earthquake-Resistant Structures- Design, Assessment and Rehabilitation, Available from: <http://www.intechopen.com/books/earthquake-resistant-structures-design-assessment-and-rehabilitation>

Tabeshpour MR (2009) Masonry Infill Walls in Structural Frames (in Farsi) Fadak Issatis Publisher, Tehran

Tabeshpour MR (2013) Infilled Frames (in Farsi) Fadak Issatis Publisher, Tehran

Tsai M and Huang T (2009) Effect of Interior Brick-infill Partitions on the Progressive Collapse Potential of a RC Building: Linear Static Analysis Results, *Engineering and Technology*, 50: 883–889

Vicente RS, Rodrigues H, Varum H, Costa A and da Silva JARM (2012) Performance of masonry enclosure walls: lessons learned from recent earthquakes, *Earthquake Engineering and Engineering Vibration*, 11(1): 23-34

Yata anSerkan (2011) Damages and Failures Observed in Infill Walls of Reinforced Concrete Frame after 1999 Kocaeli Earthquake, *ITU A/Z*, Vol 8, No 1: 219-228

Zhao B, Taucer F and Rossetto T (2009) Field Investigation on the Performance of Building Structures during the 12 May 2008 Wenchuan Earthquake in China, *Engineering Structures*, 31(8): 1707-1723

